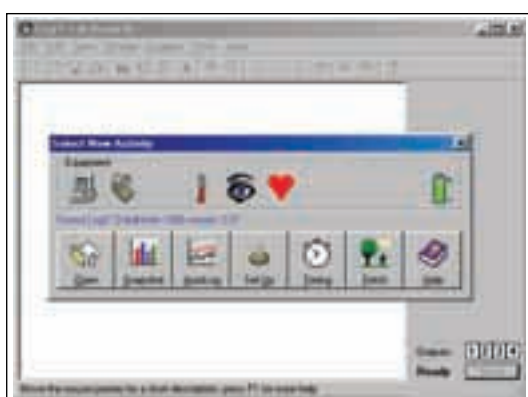
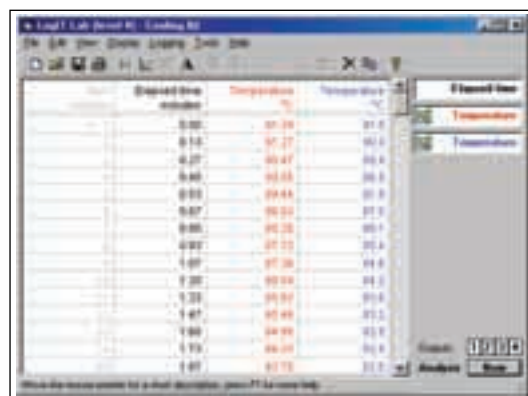


**USB & SERIAL COMPATIBLE**

**e-Learning Credits can be used for this Curriculum Online Certified Digital Learning Resource.**

**NEW SOFTWARE:  
KEEP UP TO DATE BY VISITING  
[www.dcpmicro.com](http://www.dcpmicro.com)**

## SOFTWARE GENERAL INFORMATION

All of the following software packages support LogIT data logging. The software works with DataMeter 1000, LIVE, LogIT SL and Explorer, except where indicated. A link cable is required to connect the data logger to the computer - in some cases this is supplied with the data logger package or, where stated, with the software. A spare serial/USB data port is required on the computer.

Cables are available separately, see page 28. In all cases, the software automatically recognises the sensors and their calibration. As our data logging software is constantly being developed and enhanced, please check the LogIT web site at [www.dcpmicro.com](http://www.dcpmicro.com) for free demos and details of latest versions - including support for new computers and operating systems.

Software supplied in LogIT Starter Packs comes with a single user license but additional licenses can be purchased separately. Two forms of license are available depending on the software; either a fixed number user license (eg 5 or 20 user) or a full site license which covers any number of machines at the single school site which purchased the license.

## LogIT Lab for Windows

### Windows 95, 98, ME, 2000, NT, XP and Win 3.1

LogIT Lab is written specifically for the LogIT range and so is easy to use, supports many unique LogIT features, and is very good value.

It is designed for use across all age ranges and allows any one of four skill levels to be selected to cater for different ability students. LogIT Lab comprises the main functions of data logging, timing and control. The software can display results in graph, bars, table or notes form and export data in various formats including the ability to cut and paste directly into spreadsheets and word processors.

The software is very intuitive and requires no setting up. It automatically detects which LogIT data logger you have and which port it is connected to. Microsense® sensors are automatically recognised and displayed - along with basic details of their range, accuracy and resolution. Setting up the more advanced features is straightforward by using the built in set-up wizards.


Once the hardware is set up all you need to do is click on AutoLog and start logging - the axes of the graph and its plotting are automatic and the time axis simply redraws itself so there is no need to preselect a time span for the experiment. You can even zoom in on key areas of the graph, analyse results or check the table while still logging.

The log rate can be left on automatic (AutoLog), readings can be stored on request (snapshot), or the log rate can be set by the user from 500 readings per second (depending on computer system and data logger) to 1 per hour. A maximum of 5000 readings per sensor can be stored (system dependent).

Real time timing provides direct measurement of time interval, speed, velocity, acceleration, momentum, kinetic energy, simple harmonic motion period. The timing function measures with 64 microsecond resolution from a few milliseconds to one hour and supports up to three sensors. Other features include; simple feedback control for use with LogIT control products such as relay and SwitchIT, manually entered data together with sensor data; flexible overlay of repeat experiments; counting option for digital sensors; scale options available (eg. temperature can have °C, °F or K). LogIT Lab is compatible with the LogIT Serial to USB cable and is also compatible with most popular Windows operating systems, including Windows XP.

An evaluation version is downloadable free from [www.dcpmicro.com](http://www.dcpmicro.com) (LogIT Lab is the software included in many of the Windows LogIT data logging starter packs).

This version of LogIT Lab is compatible with LIVE, LogIT SL, DataMeter 1000 and Explorer. LogIT Lab DV is available which is also compatible with the new LogIT DataVision and is listed on page 9.

Catalogue No	Description	£ each
<b>CRD-320-004B</b>	LogIT Lab - Single user	36.50
<b>CRD-320-005W</b>	LogIT Lab - Site License	91.50
<b>CRD-134-150V</b>	LogIT Serial to USB Link Cable	19.99
	Allows any Serial LogIT to directly connect to USB for WIN 98SE & above or Mac OS8.6 & above	

## LogIT Link for Pocket PC

Compatible with Windows CE 2.0+ / Pocket PC

LogIT Link for PocketPC software is compatible with colour & monochrome Palm and other portable computers running the Pocket PC/Windows CE version 2 or later operating system and which have a serial connection link.

The software provides a real time graph display, with calibrated numeric values and automatic time scaling of all 3 sensors simultaneously for up to 24 hours. Time and speed measurement can be carried out with digital sensors e.g. light gates and it offers a simple feedback control function for use with LogIT control products such as the Control Relay or SwitchIT. Remotely logged data can be fetched, displayed and re-exported from LogIT SL or DataMeter 1000.

The Data can be exported in CSV, SID and TEXT format and can be copied and pasted directly into Pocket Excel (often supplied as standard on the computer) or to a main PC using the Pocket PC's own utilities.

The software is supplied on a CD ROM; simply use the 'mobile devices' software and cable provided with your machine to copy the software from the desktop computer's CD drive onto the CE machine (Full instructions provided).

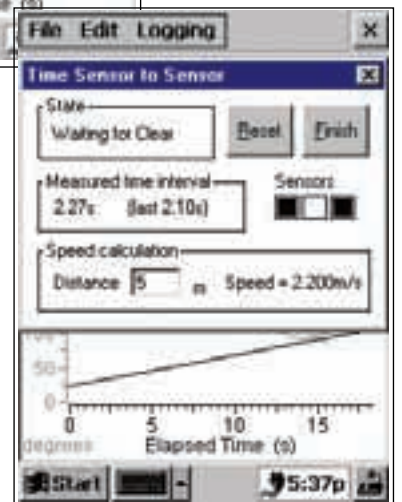
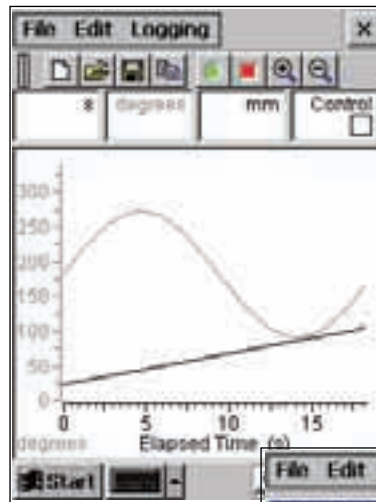
### Linking LogIT to the Pocket PC

If your Windows CE computer has a standard PC 9-pin D type serial connector built in (like a desktop computer - for example the NTS Dreamwriter), you can use a standard LogIT PC Link Cable (CRD-134-060W) to connect to your LogIT. If it is supplied with a docking station/lead to connect it to a desktop PC, you will need a PC cable to LogIT adaptor (CRD-134-095D below).

□ Please note this product is compatible with DataMeter, LogIT SL and LIVE but not compatible with LogIT Explorer or LogIT DataVision. Contact us or check [www.dcpmicro.com](http://www.dcpmicro.com) for the latest information.

Catalogue No	Description	£ each
CRD-320-070L	LogIT Link for Windows CE 2+: Single user license	36.50
CRD-320-075B	LogIT Link for Windows CE 2+: Full site license	91.50
CRD-134-095D	PC cable to LogIT adaptor	9.90

See page 30 for software and connection packs for older computer and Palmtop platforms which are available only while stock lasts.





**New** Datalogging Insight 4  
Windows 95, 98+, ME, 2000, NT, XP

Designed for Science Teachers who put observation, measurement and analysis at the heart of their practical investigation lessons. Datalogging Insight is designed to support practical work by collecting and recording data from sensors, displaying data in graphical formats, analysing data through interactive tools and modelling experimental data.

**Datalogging Insight 4 comprises the following elements:**

**On the CD:**

**The Datalogging program:**

- For recording and graphing signals continuously from analogue sensors
- For timing of events and measuring the motion of moving objects using digital sensors
- For handling numerical and text data entered through the keyboard
- For building formulae and mathematical models

**The Insight Laboratory:**

- Interactive tutorials explaining datalogging and modelling techniques
- Interactive screen guides to a range of practical experiments

**Sample Datafiles:**

- Ready for classroom activities using ready-made data

**In printed form:**

**Teaching and Learning Guide:**

- Teachers' notes and ideas for activities

**Program Guide:**

- Detailed explanations of the programs and how to use them

**Quick Reference Card:**

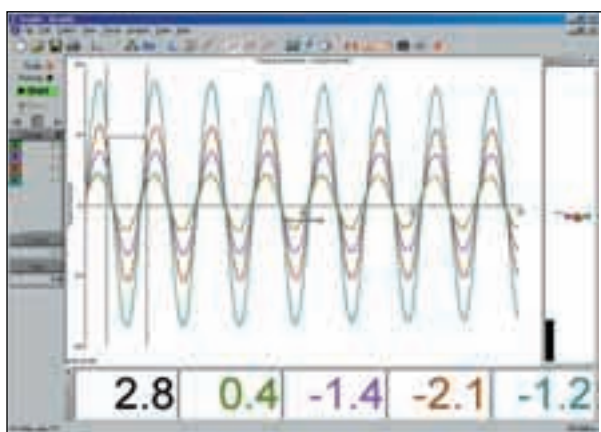
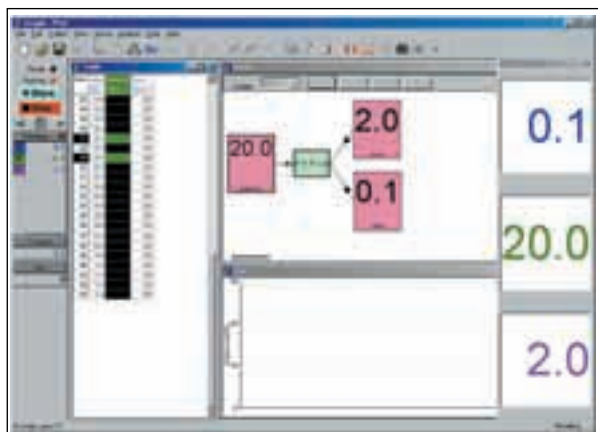
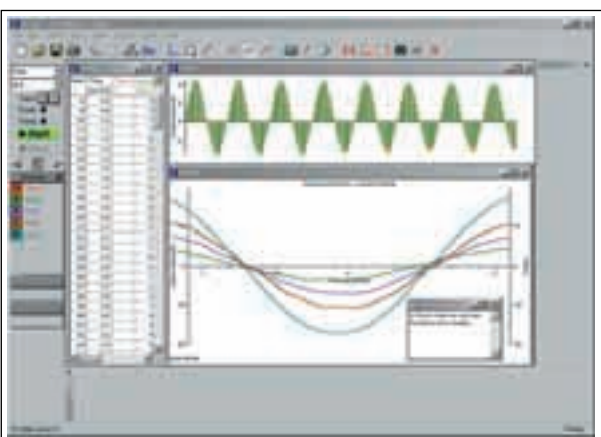
- Prompts for setting up and for using analysing and modelling tools.

**Datalogging Insight 4 software**

The main Insight program offers live data capture from any LogIT and downloading of remotely collected data. You can also enter data directly from a keyboard to build formulae and mathematical models. Data can also be imported or exported from compatible software.

**Other Enhancements in Datalogging Insight 4**

- Provides instant and accurate readouts from graphs allowing change, gradient, rate of change, time interval, ratio, average and area to be quickly obtained.
- Manipulate data tables with all major features of a spreadsheet.
- Continual automatic logging option, avoiding the need to set experiment timespan.
- Versatile calculator for building formulae with results shown on the graph.
- Advanced curve fitting techniques
- Builds mathematical models to generate data replicating experimental results.
- Management facility for monitoring pupils performance, diagnosing errors and providing remedial advice.
- Designed for 32 bit operating systems only (ie WIN 95 & above)



**USB & SERIAL  
COMPATIBLE**

## DataLogging Insight 4 - The Insight Laboratory

DataLogging Insight 4 also incorporates Insight Laboratory which is a free-standing interactive tutorial guide which runs co-operatively alongside Datalogging Insight, offering a series of lessons and experiments which help the student gain confidence in making full use of Datalogging Insight as a lab analysis tool.

It incorporates facilities for monitoring individual performance, diagnosing errors and providing remedial advice.

The range of experimental modules can be used to provide:

- On screen instructions/reminders for performing experiments
- Tutorials in analysis techniques
- Revision and practice
- Illustrations of suitable questions on exploring experimental data

Experiments include:

- Evaporation and cooling
- Current and Voltage
- Rate of reaction
- Pendulum motion
- Force and acceleration
- Enzymes and temperatures
- Velocity in free fall
- Animals keeping warm
- Radioactive decay

(Macintosh version due 2004 - call for latest information)

Catalogue No	Description	£ each
<b>CRD-141-300Q</b>	Datalogging Insight 4 single user pack with manuals and CD	85.00
Additional user licenses for Datalogging Insight 4:		
<b>CRD-141-305G</b>	Additional 5 user license	102.00
<b>CRD-141-310N</b>	Additional 10 user license	179.00
<b>CRD-141-315D</b>	Additional 20 user license	255.00
<b>CRD-141-320K</b>	Additional 40 user license	340.00
<b>CRD-141-325A</b>	Additional 60 user license	403.00
<b>CRD-141-330H</b>	Additional 80 user license	466.00
<b>CRD-141-335U</b>	Additional 100 user license	529.00

**Upgrades:** Upgrades from Insight 2/3 to Datalogging Insight 4 are available from DCP - please check [www.dcpmicro.com](http://www.dcpmicro.com) for details.

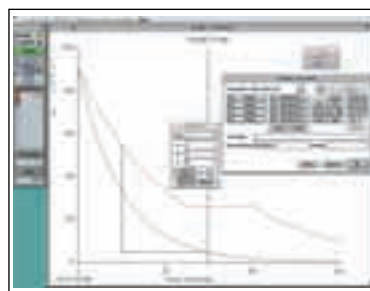
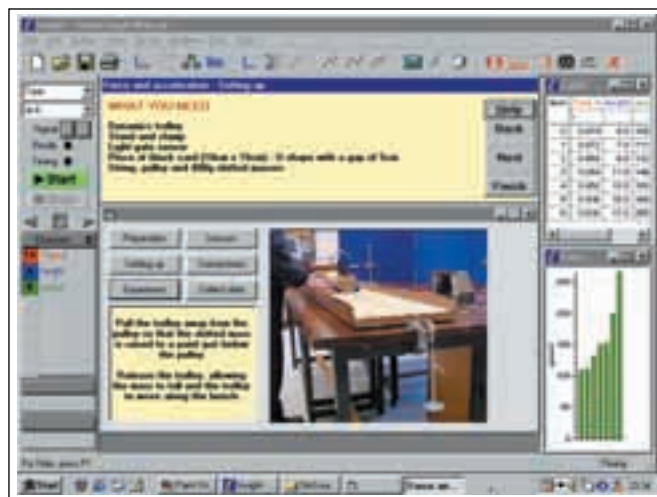
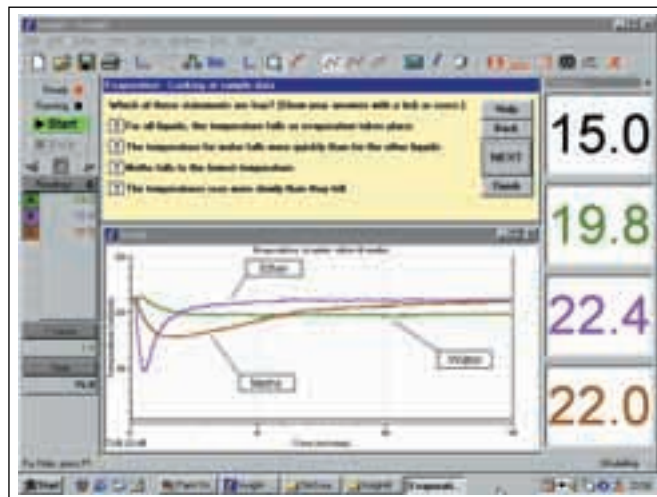
### Insight 3 (Apple Mac 8.6+ / Windows 95+)

Insight 3 software is supplied on a dual format Windows / Mac CD and is only compatible with 32 bit operating systems like Mac OS 8.6 on a Power PC/G3/G4 or Windows 95+ on a PC. Although Datalogging Insight 4 supercedes it, Insight 3 remains available for a limited time for Mac users and multi-user licenses. The software comes with CD, comprehensive program and teaching guides.

- PC & Compatible: 486 or better - Win 95 & above - 16Mb RAM minimum - 6Mb Hard Disk Space - VGA colour
- Apple Macintosh: Power PC/G3/G4 running OS 8.6 or above - 16Mb RAM minimum - 8Mb Hard Disk Space - Colour monitor

Catalogue No	Description	£ each
<b>CRD-141-012V</b>	Insight 3 single user pack for Mac & PC with manuals and CD	85.00
Additional licenses for Insight 3		
<b>CRD-141-045G</b>	Additional 5 user license	102.00
<b>CRD-141-075U</b>	Additional 10 user license	179.00
<b>CRD-141-150J</b>	Additional 20 user license	255.00
<b>CRD-141-200U</b>	Additional 40 user license	340.00

Insight 2 multi-user licenses also available while stocks last - please see page 30 for details

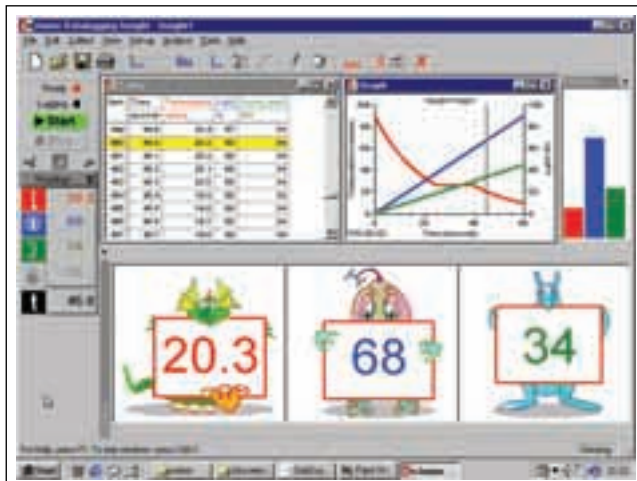


**USB & SERIAL  
COMPATIBLE**

**e-Learning Credits can be used for this**

**Curriculum Online Certified  
Digital Learning Resource.**

**new** Junior Datalogging Insight 4  
Windows 95, 98+, ME, 2000, NT, XP



Junior Datalogging Insight is a totally new version of this popular Primary software and it will swiftly prove a motivating tool in the challenging area of England and Wales Key Stage 2-3 or Scotland Levels A to E science.

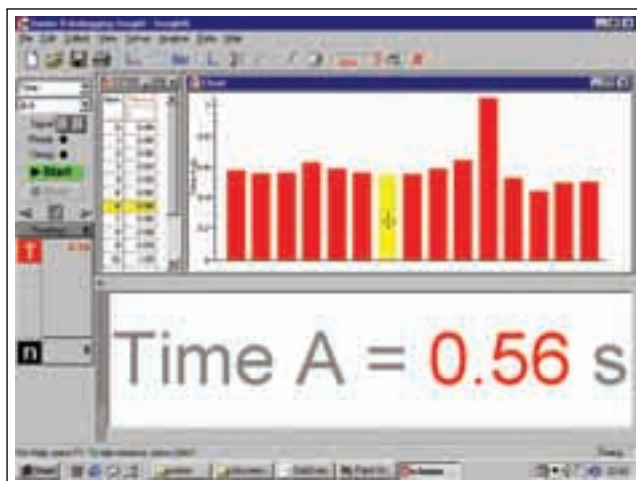
Hundreds of potential experiments can be quickly conducted by using LogIT sensors, loggers and this software. Junior Datalogging Insight 4 makes particularly good 'next step' software for LogIT Explorer and also works with LogIT DataMeter 1000, LogIT SL and LIVE.

The software allows pupils to quickly set up experiments and start collecting data, helping to stimulate and maintain interest.

Junior Datalogging Insight is designed to motivate pupils and promote learning as children work through the planning, obtaining, presenting, considering and evaluating of evidence elements of the science curriculum.

**Junior Datalogging Insight 4 offers the following features:**

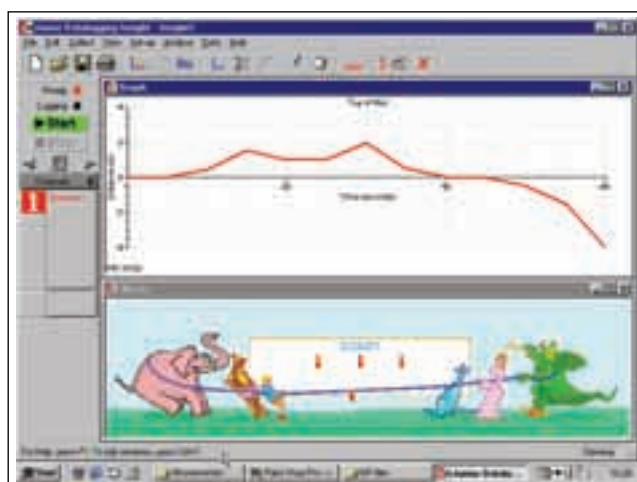
- Easy to use Control Panel with a simple format
- Simple 'stretch' and 'squeeze' control over the graph
- A table which grows with the amount of data
- Choice of horizontal or vertical bars when using the chart display
- Cursors for selecting readings and analysing data
- Bold display of digit values with optional cartoon characters for identifying sensors
- Sensors are identified by icons and customised labels
- Bar display shows changes in 'real time' or 'action replay'



**Movie window**

Unique to Junior Datalogging Insight 4 is the Movie window which allows pupils to control an animated cartoon with a sensor or graph reading. Movies include Fireman, Tug of War, Rapunzel and Racing Dragons. These animations are particularly useful for promoting thinking and teaching about how graphs work.

Designed for Windows 95+. (Macintosh version due 2004)



Catalogue No	Description	£ each
CRD-325-010W	Junior Datalogging Insight 4 single user pack with manuals and CD	52.00
Additional licenses for Junior Datalogging Insight:		
CRD-325-500F	Additional 5 user license	62.00
CRD-325-510C	Additional 10 user license	109.00
CRD-325-520W	Additional 20 user license	156.00
CRD-325-530T	Additional 40 user license	208.00

**USB & SERIAL  
COMPATIBLE**

**e-Learning Credits can be used for this  
Curriculum Online Certified  
Digital Learning Resource.**

**Junior Insight 3**  
Windows 3.1, 95+ and Apple Mac OS8.6 or above

Designed for use in primary and middle schools, with simpler functions and graphics than 'senior' Insight.  
The software is supplied on a dual Mac / Windows format CD and comes complete with comprehensive manual.  
Compatible with LogIT LIVE, LogIT SL, DataMeter 1000 and Explorer.

The program is split into two modules:

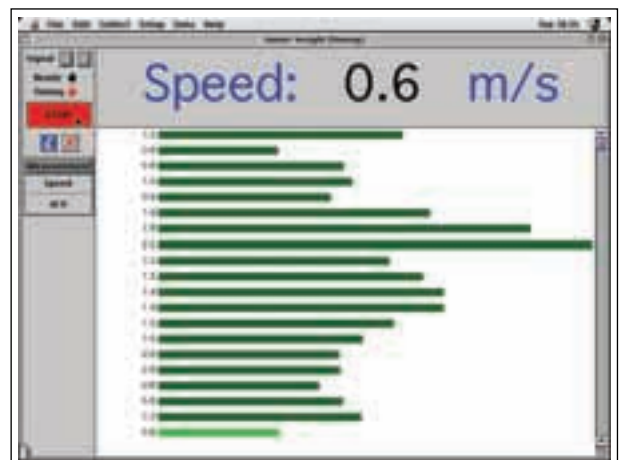
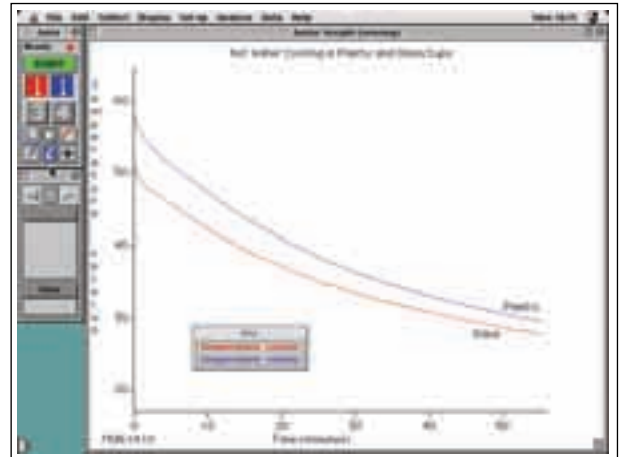
- The Sensing module is used for analogue sensors and displays in graph and bars and has easy to use analysis tools as well as single channel control.
- The timing module is used with digital sensors such as light gates or light switches and can calculate time and speed.

Although Junior Datalogging Insight 4 supercedes it, this version remains available for a limited time for Mac users and multi-user licenses. The software comes on CD and includes a comprehensive manual with experiments.



- PC & Compatible: 486 or better - Win 95 & above - 16Mb RAM minimum - 6Mb Hard Disk Space - VGA colour
- Apple Macintosh: Power PC/G3/G4 running OS 8.6 or above - 16Mb RAM minimum - 8Mb Hard Disk Space - Colour monitor  
Contact for multi-user license information.

Catalogue No	Description	£ each
CRD-320-020D	Junior Insight 3 for both Windows & Mac	52.00

**ADDITIONAL USER LICENSES  
AVAILABLE ON REQUEST**



**Computer Link cables for LogIT and any Windows or Mac software**

Catalogue No	Description	£ each
 CRD-134-150V	USB Mac or PC to Serial LogIT Link. Enables a Serial LogIT to directly connect to USB for WIN 98SE & above or Mac OS8.6 & above	19.99
CRD-134-060W	PC & Archimedes serial link cable - for 9 pin serial COM port computers	9.90
CRD-134-070T	9 to 25 pin COM port adapter	5.00
CRD-134-100N	Apple serial link cable - suitable for Mac or eMate 300 with a printer/modem port	14.90
 CRD-134-140B	USB A-B cable for USB equipped LogIT	7.90
CRD-145-046D	Psion 3C or Pocket Book 3 link cable for direct connection to serial LogIT	25.00
CRD-134-090N	Psion 3/3A or Pocket Book 1 RS232 to serial LogIT cable (needs PSIWIN adapter)	14.90
CRD-134-095D	PC cable to LogIT adapter - connects the PC serial connection lead from a Handheld or PocketPC to LogIT to a LogIT serial port	9.90
CRD-150-540S	1.8m link cable Extension lead	6.90

**USB & SERIAL  
COMPATIBLE**